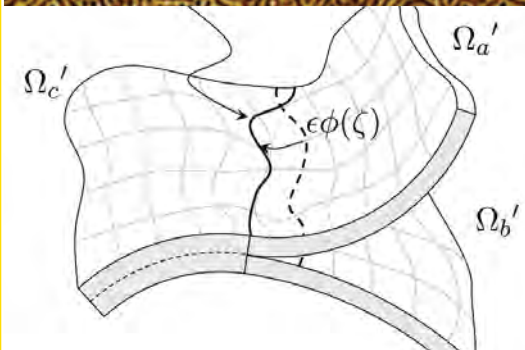
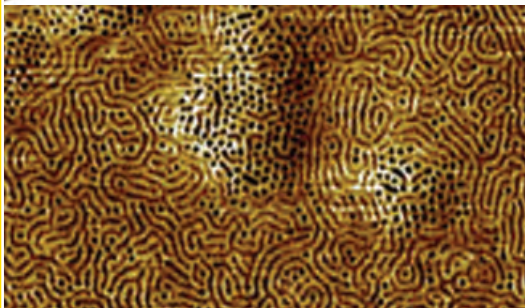
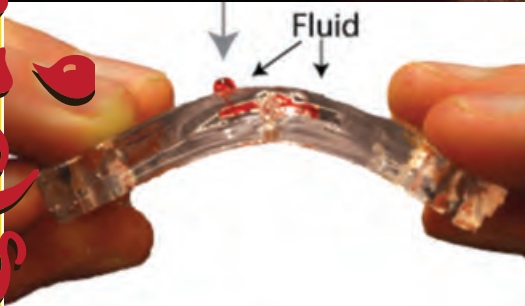
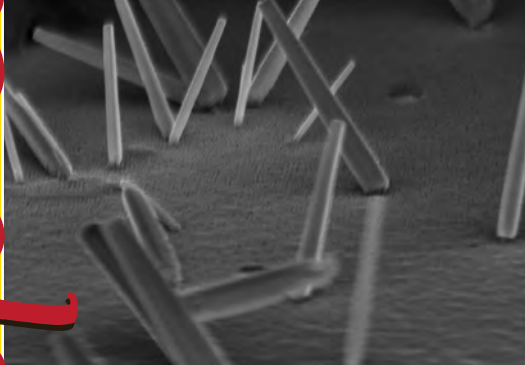
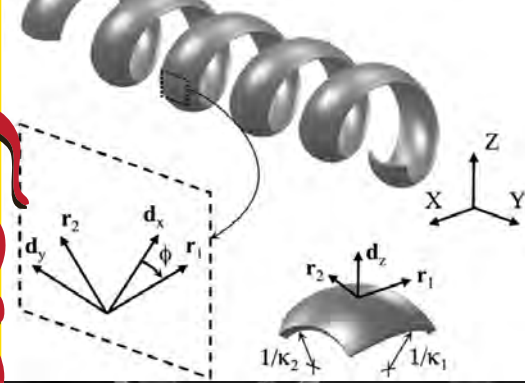


Complex fluids



54th New England Complex Fluids Workshop

Friday, March 15, 2013

Luce Hall

Yale University

New Haven, Connecticut

8:45 am – 5 pm

Invited speakers

Douglas Holmes (Virginia Tech.)

Carmel Majidi (Carnegie Mellon)

Pedro Reis (MIT)

Rob Style (Yale University)

Zhigang Suo (Harvard University)

Topics of invited talks

Using Thin Films of Rubber to Move Thin Films of Fluid

Adhesion and Spontaneous Deformation of Thin Elastic Sheets

Mechanics of Shells

Wetting on Soft Substrates

Mechanics of Hydrogels

Objectives

These workshops are held to encourage collaboration

and discussion among soft condensed matter researchers

in the New England region and to facilitate career

development for students and postdocs.

Sound bites

We welcome abstract submissions for the sound-bite sessions,

which feature short talks (~4 min) highlighting current research.

Organizing committee

Prof. Eric Dufresne

eric.dufresne@yale.edu

Prof. Corey O'Hern

corey.ohern@yale.edu

Prof. Chinedum Osuji

chinedum.osuji@yale.edu

Website www.complexfluids.org

Registration deadline **March 13, 2013**

Sponsors

Center for Research on

Interface Structures and Phenomena

Department of Chemical

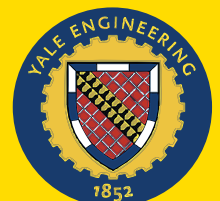
and Environmental Engineering

Department of Mechanical Engineering

& Materials Science

School of Engineering & Applied Science

Yale University



54th New England Complex Fluids Workshop

March 15, 2013 • Yale University

Parking

Parking is provided free of charge to all participants at Science Hill parking garage, 200 Prospect Street (behind Ingalls Rink).

Guests must use PIN pad number **663#** (including the pound sign) to enter and exit the parking lot. Only limited street parking is available and is not recommended.

Directions to Yale Campus and Science Hill Parking Garage

From I-95:

- Take exit to **I-91** and follow directions below.

From I-91:

- Use **Exit #3** from I-91 and follow exit ramp.
- Proceed through traffic light at end of exit ramp onto **Trumbull Street**.
- At next traffic light, turn right onto **Whitney Avenue**.
- Travel north on Whitney Ave. to the **first** traffic light.
- Turn left onto Sachem Street.
- Turn right onto Prospect Street. Travel past Ingalls Rink on your left.
- The entrance to the **Science Hill parking garage** will be on your left.

Directions to Luce Hall auditorium

The workshop will be held in **Luce Hall auditorium** (Room 101) at 34 Hillhouse Avenue. It will take 5 minutes to walk from the parking garage.

- Walk south on Prospect Street. Turn left onto Sachem Street.
- Turn right onto Hillhouse Ave.
- Luce Center will be on your right and recessed from Hillhouse Ave.

